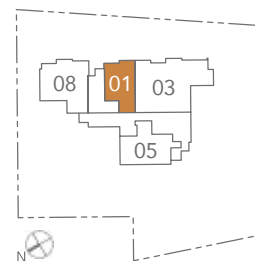
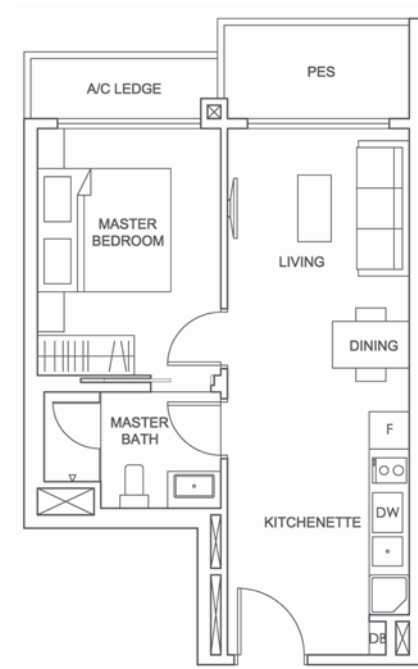


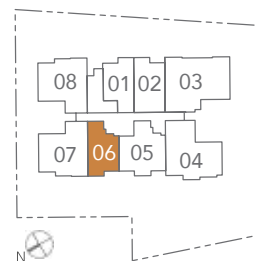
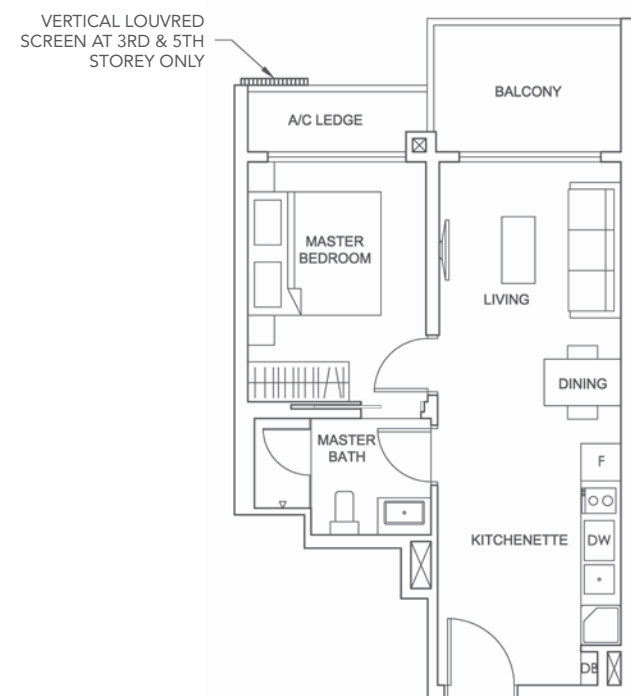
1-BEDROOM

**TYPE 1BR-BG** 47 sqm / 506 sqft #01-01



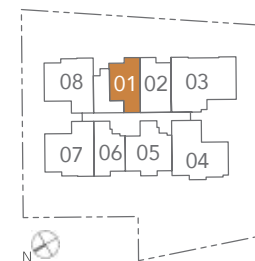
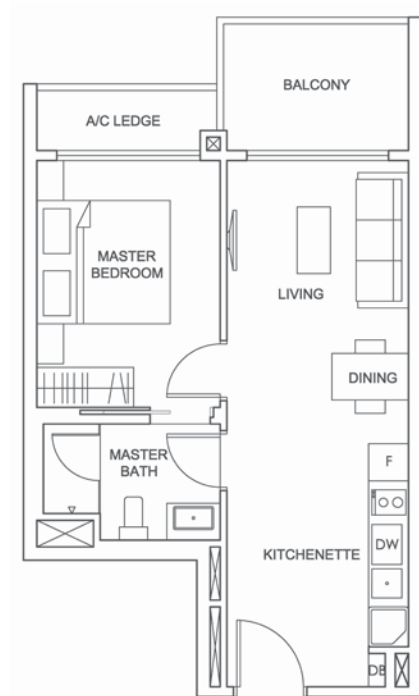
1-BEDROOM

**TYPE 1BR-A** 49 sqm / 527 sqft #02-06 to #05-06



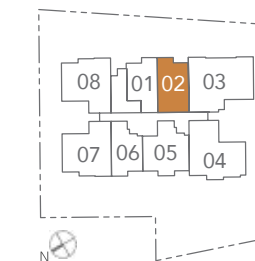
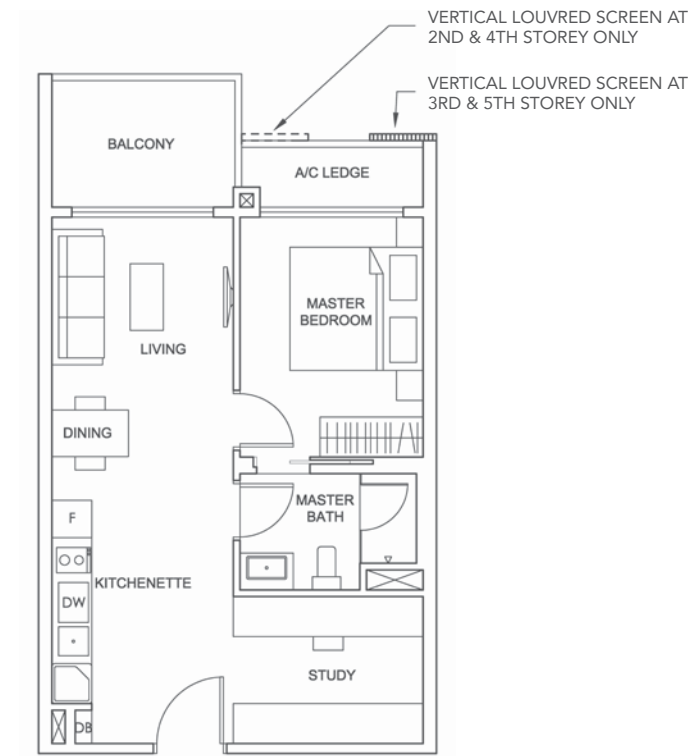
1-BEDROOM

**TYPE 1BR-B** 49 sqm / 527 sqft #02-01 to #05-01



1-BEDROOM

**TYPE 1BR-C** 55 sqm / 592 sqft #02-02 to #05-02

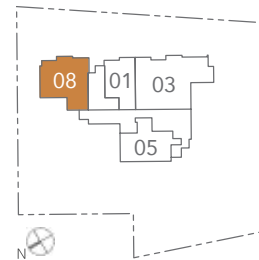
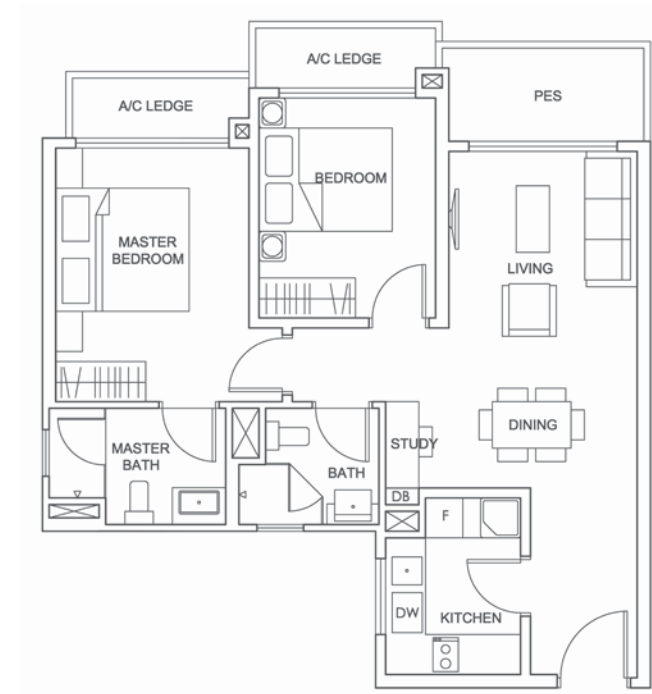


NOTE: Areas include A/C ledges, balconies, private enclosed spaces, private roof terraces and strata void areas where applicable. Areas are estimates only and are subject to final survey. Plans are not to scale and subject to changes as may be required or approved by the relevant authorities. Plans do not form part of the Sales and Purchase Agreement.

NOTE: Areas include A/C ledges, balconies, private enclosed spaces, private roof terraces and strata void areas where applicable. Areas are estimates only and are subject to final survey. Plans are not to scale and subject to changes as may be required or approved by the relevant authorities. Plans do not form part of the Sales and Purchase Agreement.

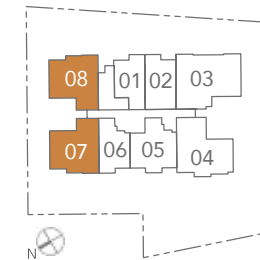
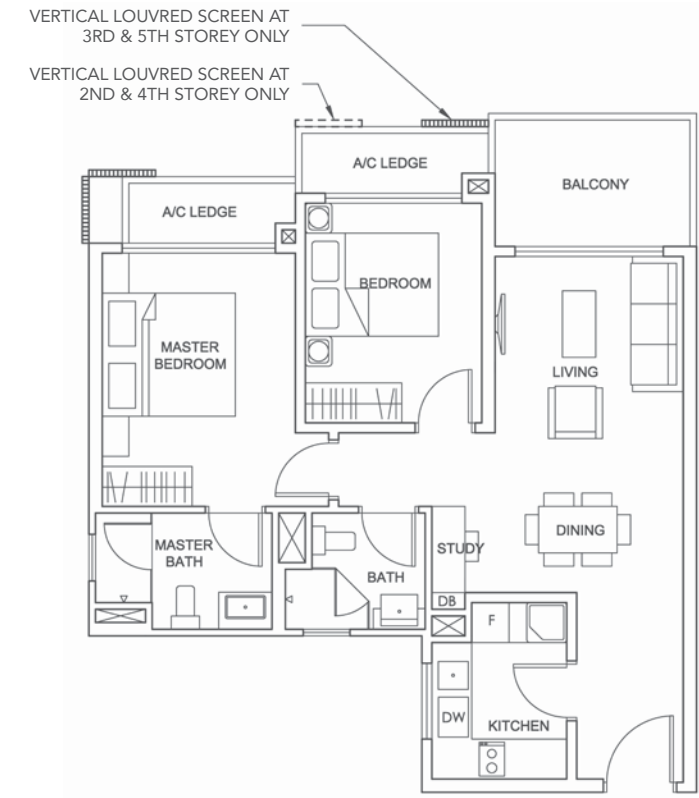
2-BEDROOM

**TYPE 2BR-AG** 73 sqm / 786 sqft #01-08



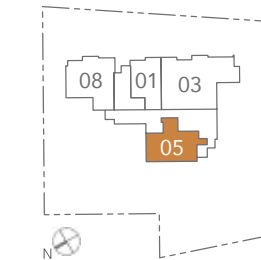
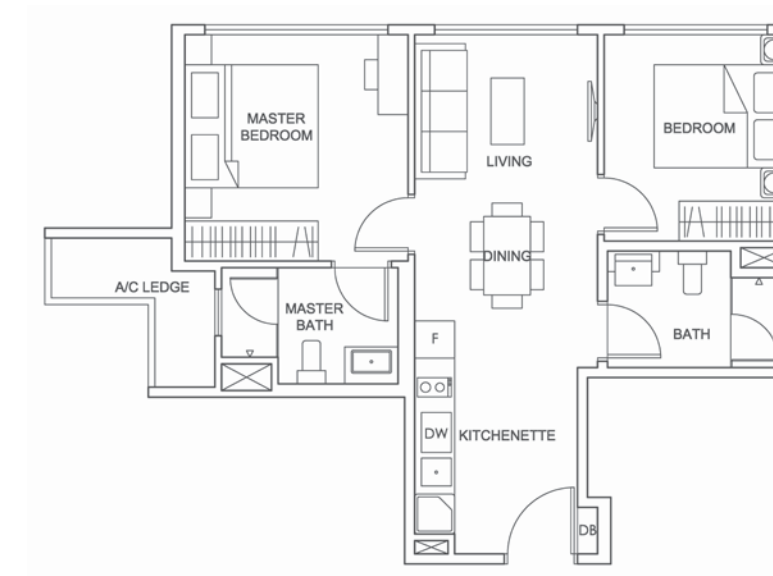
2-BEDROOM

**TYPE 2BR-A2** 74 sqm / 797 sqft #02-08 to #05-08  
**TYPE 2BR-A1** 74 sqm / 797 sqft #02-07 to #05-07 (Mirrored)



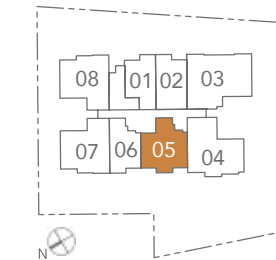
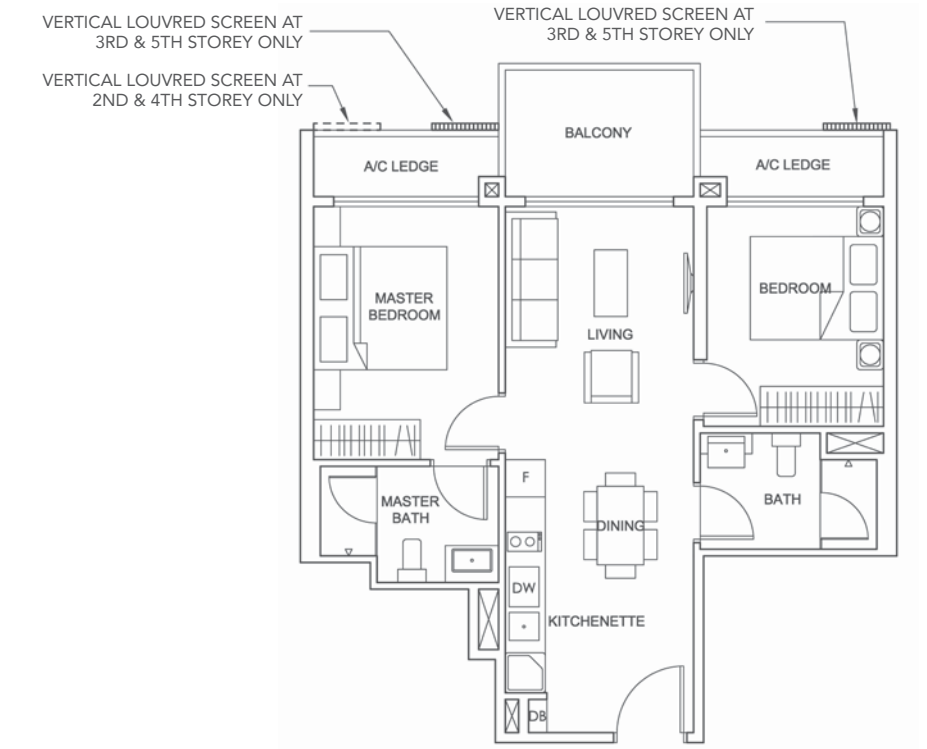
2-BEDROOM

**TYPE 2BR-G** 58 sqm / 624 sqft #01-05



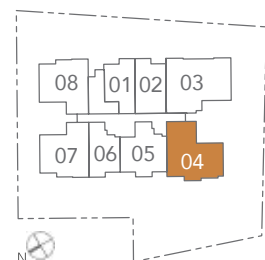
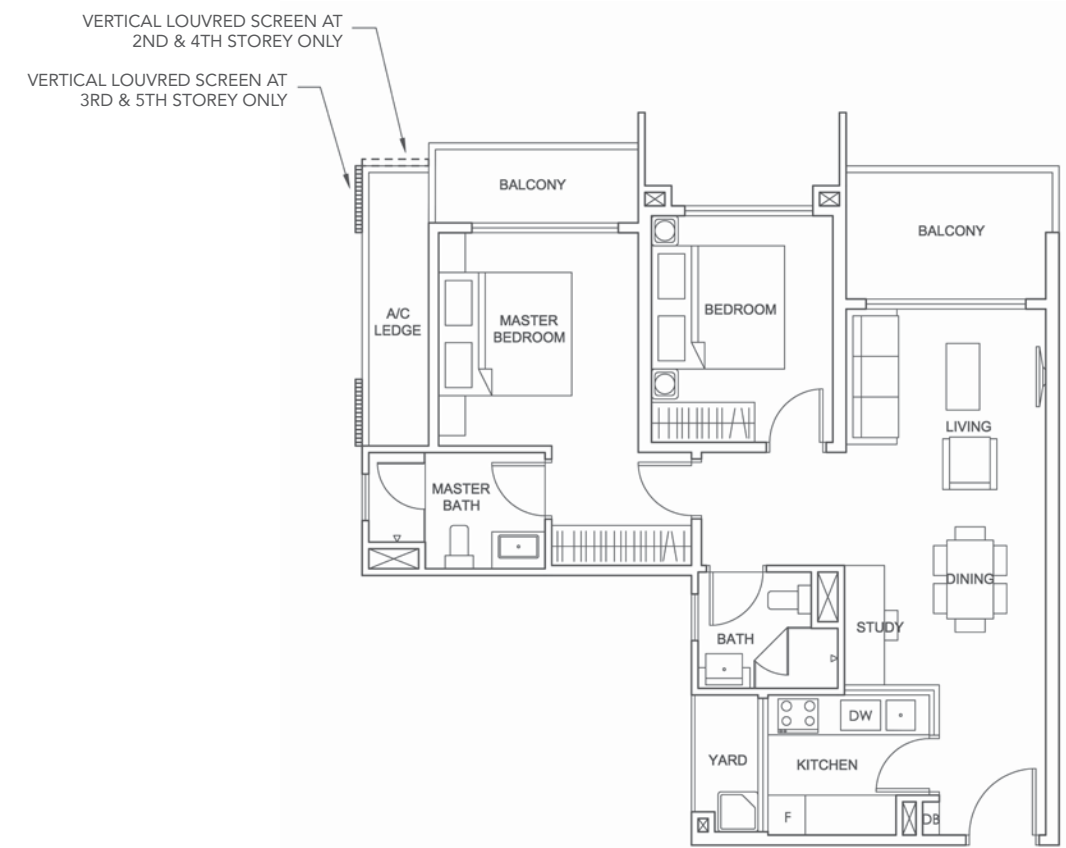
2-BEDROOM

**TYPE 2BR-B** 67 sqm / 721 sqft #02-05 to #05-05



## 2-BEDROOM

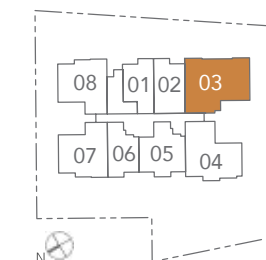
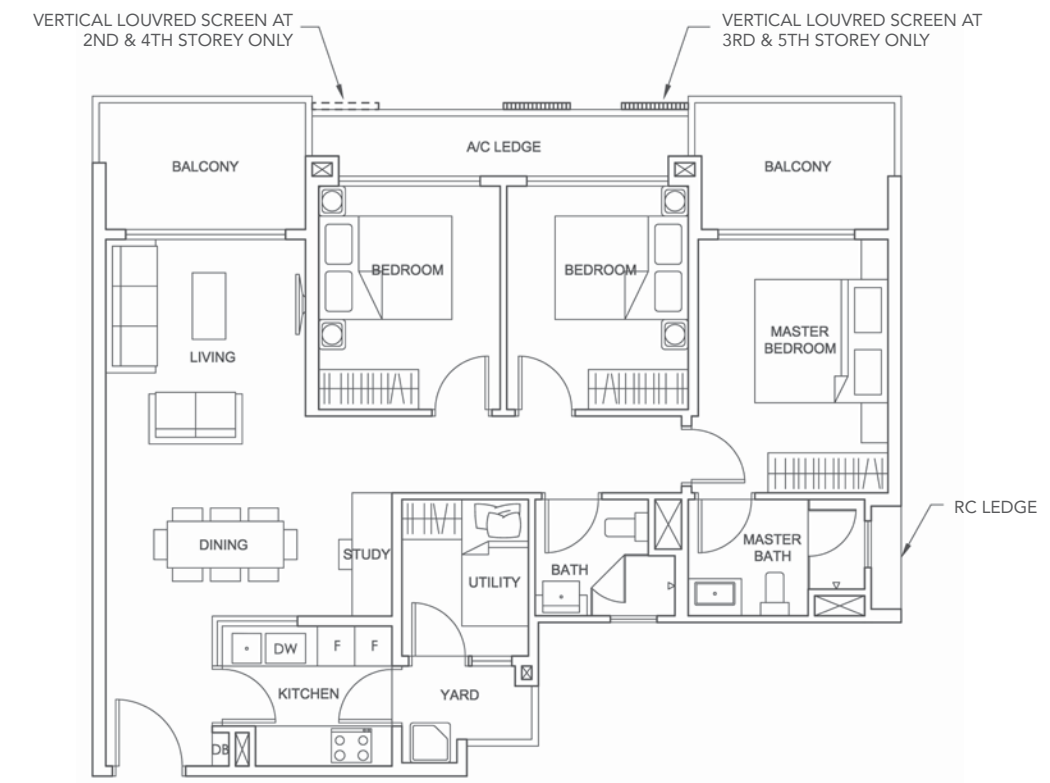
**TYPE 2BR-C** 83 sqm / 893 sqft #02-04 to #04-04



NOTE: Areas include A/C ledges, balconies, private enclosed spaces, private roof terraces and strata void areas where applicable. Areas are estimates only and are subject to final survey. Plans are not to scale and subject to changes as may be required or approved by the relevant authorities. Plans do not form part of the Sales and Purchase Agreement.

## 3-BEDROOM

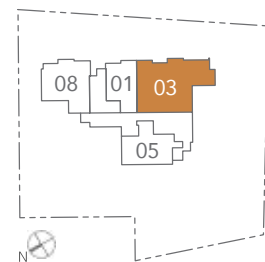
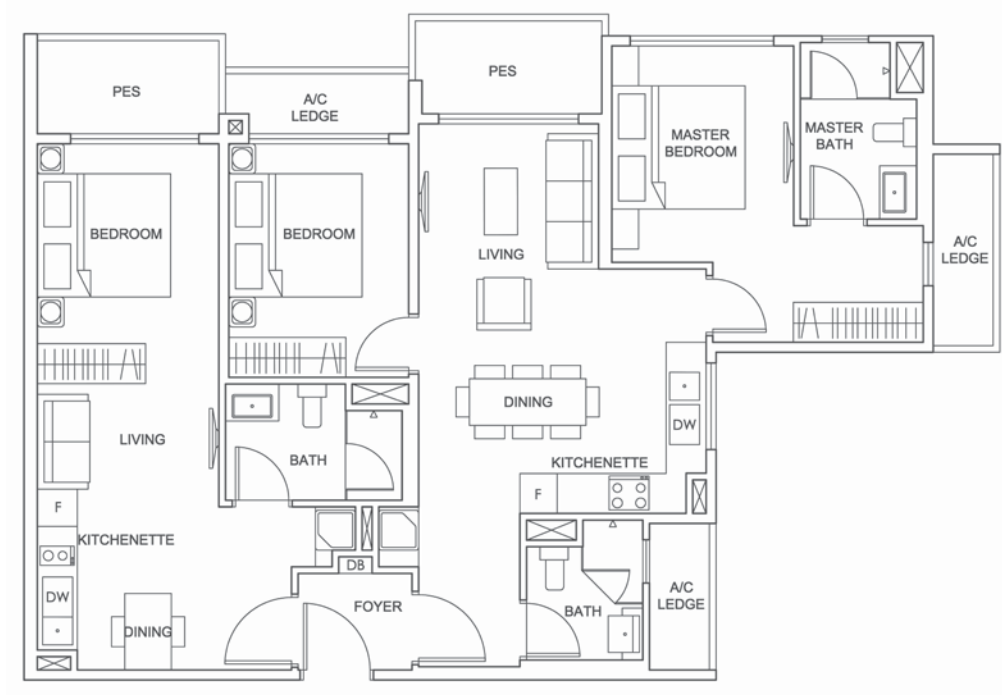
**TYPE 3BR-A** 105 sqm / 1,130 sqft #02-03 to #05-03



NOTE: Areas include A/C ledges, balconies, private enclosed spaces, private roof terraces and strata void areas where applicable. Areas are estimates only and are subject to final survey. Plans are not to scale and subject to changes as may be required or approved by the relevant authorities. Plans do not form part of the Sales and Purchase Agreement.

### 3-BEDROOM DUAL-KEY

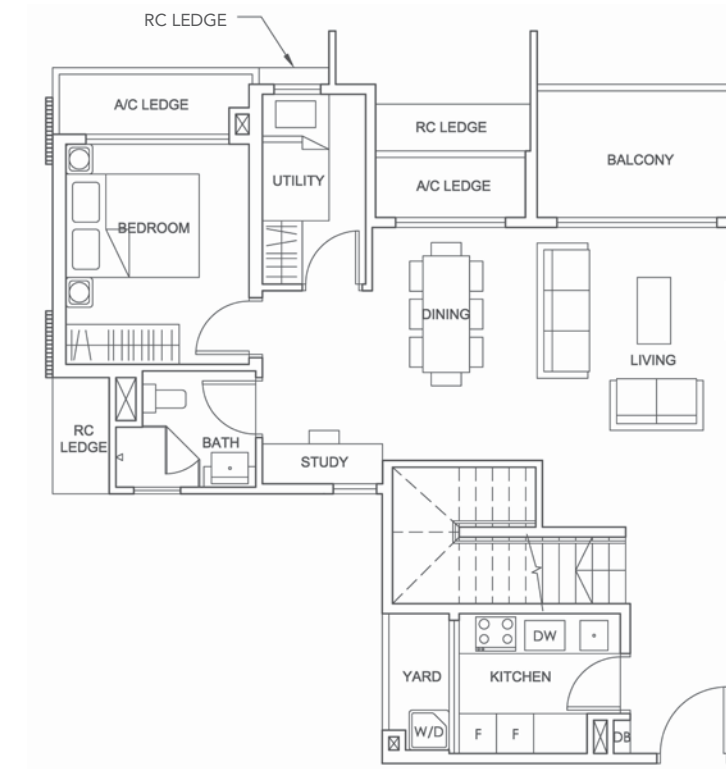
**TYPE 3BR-DK** 114 sqm / 1,227 sqft #01-03



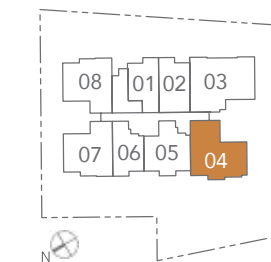
NOTE: Areas include A/C ledges, balconies, private enclosed spaces, private roof terraces and strata void areas where applicable. Areas are estimates only and are subject to final survey. Plans are not to scale and subject to changes as may be required or approved by the relevant authorities. Plans do not form part of the Sales and Purchase Agreement.

### 3-BEDROOM PENTHOUSE

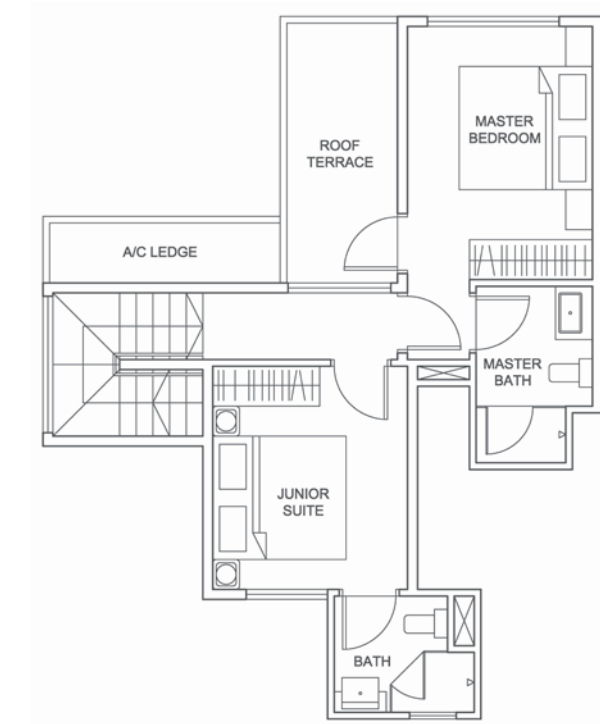
**TYPE 3BR-P** 133 sqm / 1,432 sqft #05-04



LOWER FLOOR



NOTE: Areas include A/C ledges, balconies, private enclosed spaces, private roof terraces and strata void areas where applicable. Areas are estimates only and are subject to final survey. Plans are not to scale and subject to changes as may be required or approved by the relevant authorities. Plans do not form part of the Sales and Purchase Agreement.



UPPER FLOOR